



New Zealand Ph. 03 379 7370. Fax 03 379 7371. Mobile 021 637 656  
P. O. Box 33321 Christchurch 8044. 11 Henry Street, Waltham, Christchurch

## Model 'A' Ford "Open car" door trim panel sets.

*New Zealand made.*

- ❖ Roadster 28/29 \$235.00.
- ❖ Roadster 1930 \$245.00.
- ❖ Phaeton 28/29 \$375.00
- ❖ Phaeton 1930 \$395.00.
- ❖ Roadster Pick-up 28/29 \$245.00.
- ❖ Roadster Pick-up 1930 \$295.00

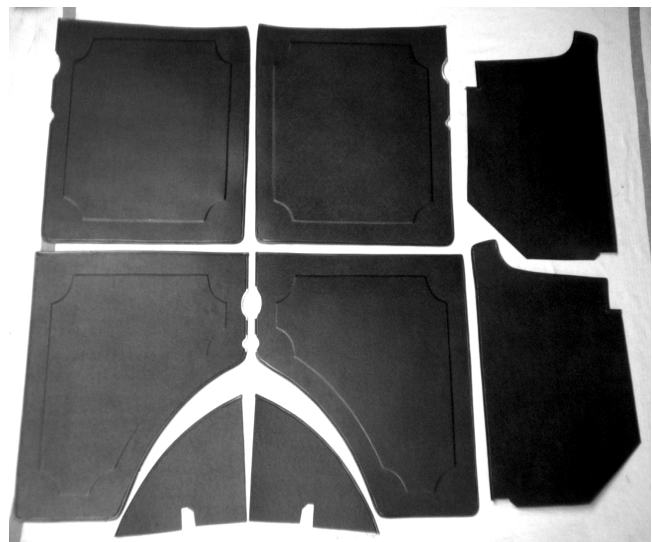
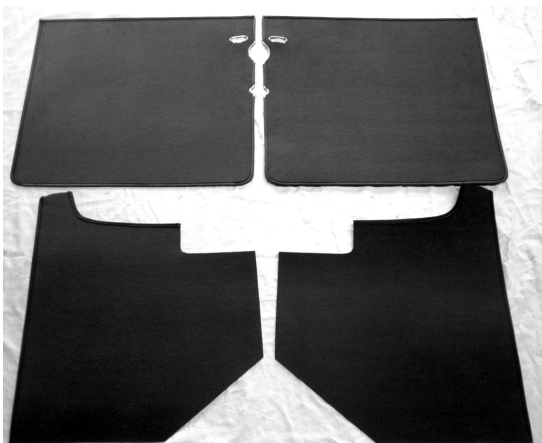
[earlyfordparts@xtra.co.nz](mailto:earlyfordparts@xtra.co.nz)

[pearsons.co.nz](http://pearsons.co.nz)

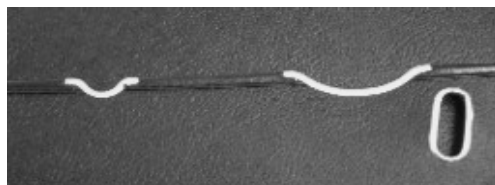
*Prices are GST inclusive.*

Typical 1930 Phaeton panels,  
showing pressed centers.

Typical 28/29 panels



Typical panels showing bias binding on all visible edges and escutcheons in place for dovetail, door latch and inner door handle.



All door panel sets are made from textured black pressboard. The 1930 door panels have the pressed raised center, with the original scalloped corners. The 1928/29 panels are plain textured black. *(These are not just a padded sewn piece of board.)*

All panels are sewn around the visible edges with black bias binding, as produced originally.

All panels for all years of open vehicle, are exact copies of original door and cowl panels, and all sets are supplied with the correct original type fasteners to hold the panels in place on the doors and cowl. All door panels are fitted with the correct escutcheons for the year. Pictured above.

Phaetons are an 8 piece set with all fasteners.

Roadsters are a 4 piece set with all fasteners.

Roadster Pick-ups are a 6 piece set with all fasteners.